

**NEWCOMER ASSOCIATES**

architecture + engineering

**Gateway Center**  
at  
Chambersburg,  
Pennsylvania

**Project Type:**

Strip retail center designed to accommodate offices, restaurants and stores.

**Square Footage:**

61,000 s.f.

**Project Description:**

The client's objective was to create a new retail center that was architecturally unique to the area, yet at the same time, radiated a quality of familiarity and permanence. The design resulted in a series of alternating historic tower forms clad in concrete brick, acrylic stucco, 'aged' stone veneer, and copper accents. The synthesis of these materials plus the connective covered walkways resulted in a beautiful facility that is both pedestrian friendly and safe.

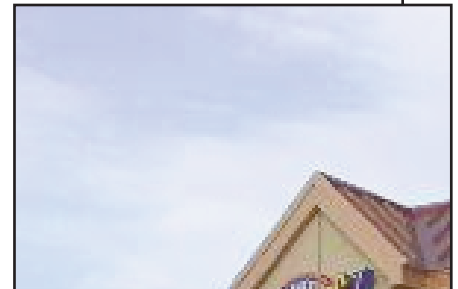
In addition, the center features a series of rear loading docks, service corridors and easy phasing expansion capabilities.

**Participants:**

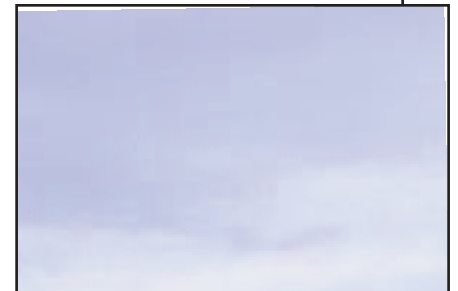
Newcomer Associates  
Martin and Martin Engineering  
Brechtbill and Helman Construction, Inc.



*Exterior Perspective*



*Exterior Perspective*



*Exterior Perspective*